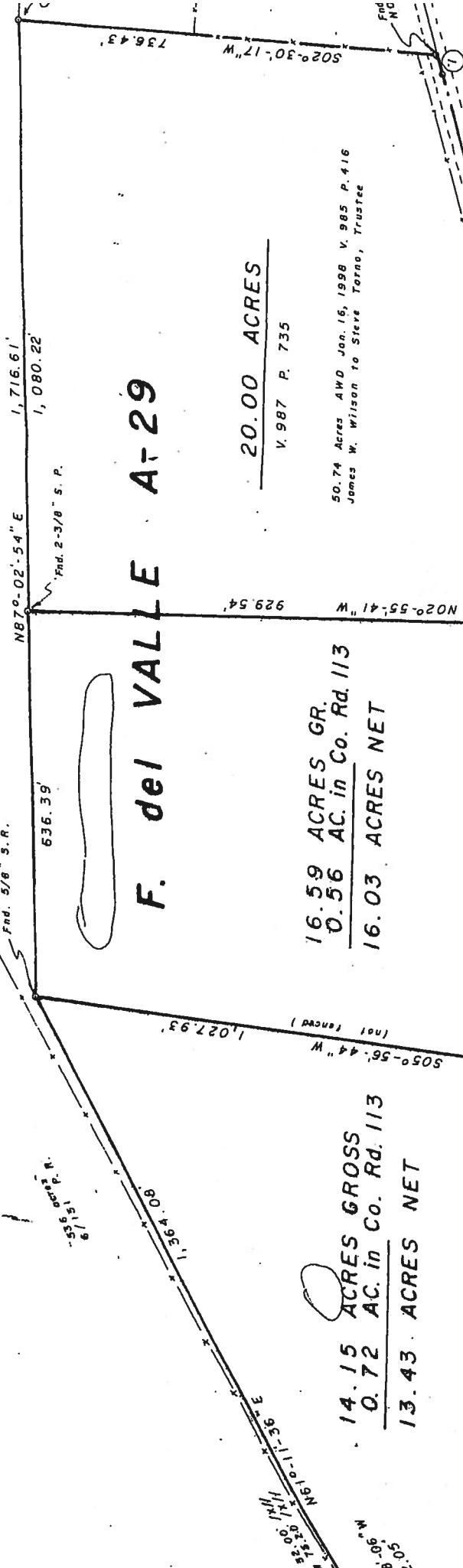


136.97 acres
V. 968 P. 005



N87°-02'-54" E
1,716.61'
1,080.22'
Fnd. 2-3/8" S. P.

Fnd. 5/8" S. R.
536.39'

Fnd. 1/2" S. R. 0/34.00'
N02°-55'-41" W
929.54'

Fnd. 1/2" S. R. 0/34.00'
N02°-55'-41" W
929.54'

Fnd. 1/2" S. R. 0/34.00'
N02°-55'-41" W
929.54'

Fnd. 1/2" S. R. 0/34.00'
N02°-55'-41" W
929.54'

F. del VALLE A-29

20.00 ACRES
V. 987 P. 735

16.59 ACRES GR.
0.56 AC. in Co. Rd. 113
16.03 ACRES NET

14.15 ACRES GROSS
0.72 AC. in Co. Rd. 113
13.43 ACRES NET

- 1 577°-40'-16" W 36.79'
- 2 573°-42'-01" W 443.70'
- 3 579°-35'-43" W 314.32'
- 4 575°-29'-02" W 235.69'
- 5 N66°-59'-11" E 180.23'
- 6 N72°-30'-50" E 131.16'
- 7 N85°-09'-24" E 313.63'
- 8 S87°-04'-27" E 186.25'
- 9 N77°-17'-23" W 252.43'
- 10 N68°-13'-12" W 238.80'
- 11 N75°-20'-46" W 185.68'
- 12 N84°-29'-40" W 360.25'

275.00 acres
V. 625 P. 99



SURVEY PLAT OF 50.74 ACRES IN THE
F. del VALLE XI I FAGIENS A-

117