

M. PHILLIPS  
A-668

36.09 AC.  
DORIS PITTMAN  
863/108

CALVIN D. WILLIAMS  
828/417

FD. I. PIN

FD. I. PIN

FD. I. PIN

FD. I. PIN

FD. I. PIN

FD. I. PIN

FD. I. PIN

FD. I. PIN

FD. I. PIN

FD. I. PIN

N 84°05'23"E 898.57'

(CALLED EAST)

10.37 AC. (1)

1.52 AC. (17)

14.65 AC. (16)

10.40 AC. (3)

10.50 AC. (4)

15.07 AC. (5)

15.10 AC. (6)

20.00 AC.  
JOSE ROLANDO TREVINO  
1015/423

JOSEPH FERGUSON  
A-271

A. HADD  
A-113C

L.C. N86°55'31"E 79.12'

A 192.21'  
R 1,432.39'  
L 30.15'

L.C. N84°44'15"E 30.14'

S 0°15'00"W  
777.58'

(CALLED SOUTH 671')

BEARING REFERENCE LINE

589°45'00"E  
525.65'

(CALLED EAST 586.1)

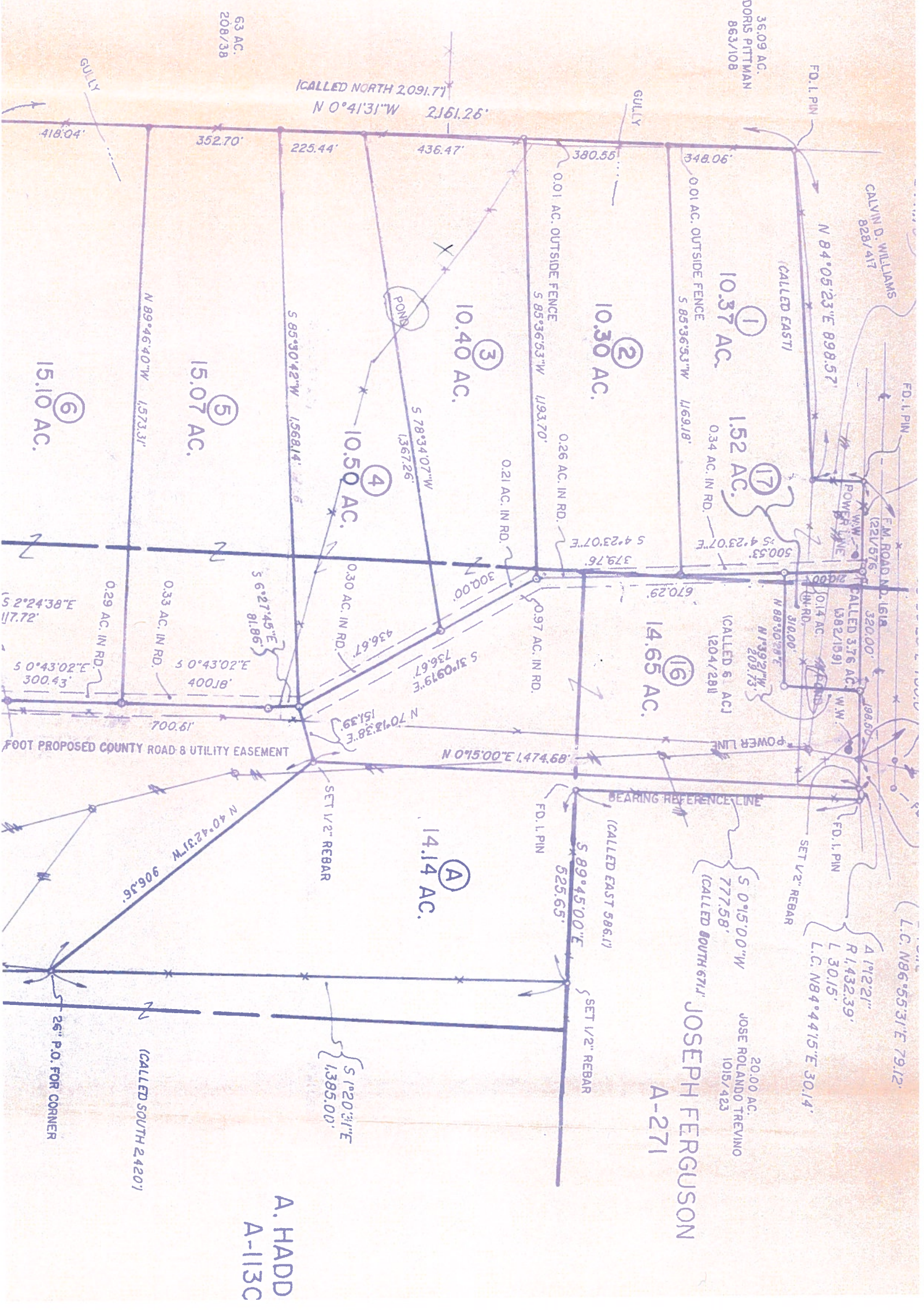
FD. I. PIN

SET 1/2" REBAR

S 1°20'31"E  
1,385.00'

(CALLED SOUTH 2420')

26" P.O. FOR CORNER



(CALLED NORTH 2091.7)  
N 0°41'31"W 2161.26'

436.47'

225.44'

352.70'

418.04'

380.55'

348.06'

0.01 AC. OUTSIDE FENCE

5 85°36'53"W 1,193.70'

0.26 AC. IN RD.

5 4°23'07"E 379.76'

670.29'

5 4°23'07"E 500.53'

320.00'

(CALLED 376 AC.)  
1204/281

5 0°15'00"E 1,474.68'

5 70°13'38"E 151.39'

5 31°09'19"E 736.67'

5 78°34'07"W 1,367.26'

5 6°27'45"E 81.86'

5 0°43'02"E 400.18'

5 0°43'02"E 300.43'

5 2°24'38"E 117.72'

0.29 AC. IN RD.

0.33 AC. IN RD.

0.30 AC. IN RD.

0.21 AC. IN RD.

N 89°46'40"W 1,573.31'

S 85°30'42"W 1,568.14'

N 70°13'38"E 151.39'

N 40°42'31"W 906.36'

FOOT PROPOSED COUNTY ROAD 8 UTILITY EASEMENT

SET 1/2" REBAR

SET 1/2" REBAR

SET 1/2" REBAR

SET 1/2" REBAR

SET 1/2" REBAR

SET 1/2" REBAR

GULLY

GULLY

POND

POWER LINE

POWER LINE

POWER LINE

POWER LINE

POWER LINE

POWER LINE

POWER LINE

POWER LINE

POWER LINE

L.C. N86°55'31"E 79.12'

L.C. N84°44'15"E 30.14'

L.C. N86°55'31"E 79.12'