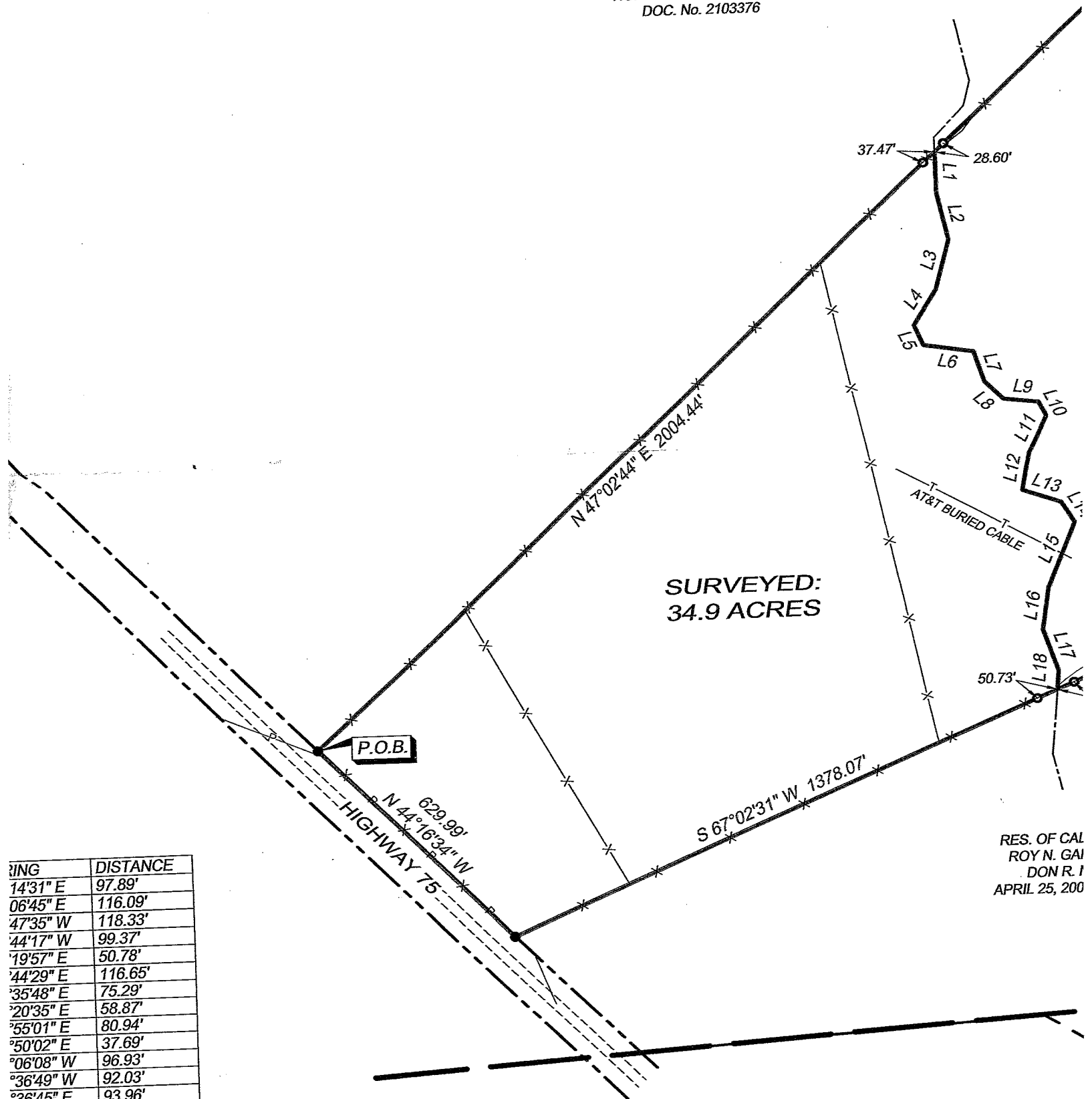


CALLED 120.393 ACRES
 HGR LAND SERVICES LLC
 DOC. No. 2103376



SURVEYED:
 34.9 ACRES

RES. OF CAL
 ROY N. GAI
 DON R. I
 APRIL 25, 200

Bearing	DISTANCE
14°31' E	97.89'
06°45' E	116.09'
47°35' W	118.33'
44°17' W	99.37'
19°57' E	50.78'
44°29' E	116.65'
35°48' E	75.29'
20°35' E	58.87'
55°01' E	80.94'
50°02' E	37.69'
06°08' W	96.93'
36°49' W	92.03'
36°45' E	93.96'
59°38' E	56.64'
09°32' W	165.10'
16°42' W	98.96'
29°56' E	102.73'
04°31' W	44.41'
17°06' W	30.10'

THE TEXAS STATE PLANE COORDINATE SYSTEM
 SYSTEM 4203, AS DERIVED BY GPS OBSERVATIONS.

REGISTERED PROFESSIONAL LAND SURVEYOR
 I CERTIFY THIS PLAT
 IS A TRUE AND CORRECT COPY
 OF AN ORIGINAL ON THE GROUND
 AND UNDER MY SUPERVISION.



EXHIBIT
 SHOWING
 DANIEL POTTER
 THE HUGH SHEPHERD
 FREESTONE