

286.59
460.10
49.11

W 184.95
Y 297.31
Y 269.40
W 74.86
W 578.94

E 210.48
E 473.65
E 57.95
W 59.46
W 334.73

Fnd. 4" x 4" C.M.

568°-32'-02" E
1,650.07

(21)
70.00 AC.

Fnd. 4" x 4" C.M.
11" P.O. N01°E 16.74 /X//
20" P.O. S83°W 22.36 /X//

Fnd. 4" x 4" C.M.
27" P.O. N22°W 6.98 /X//
12" Elm S84°W 15.44 /X//

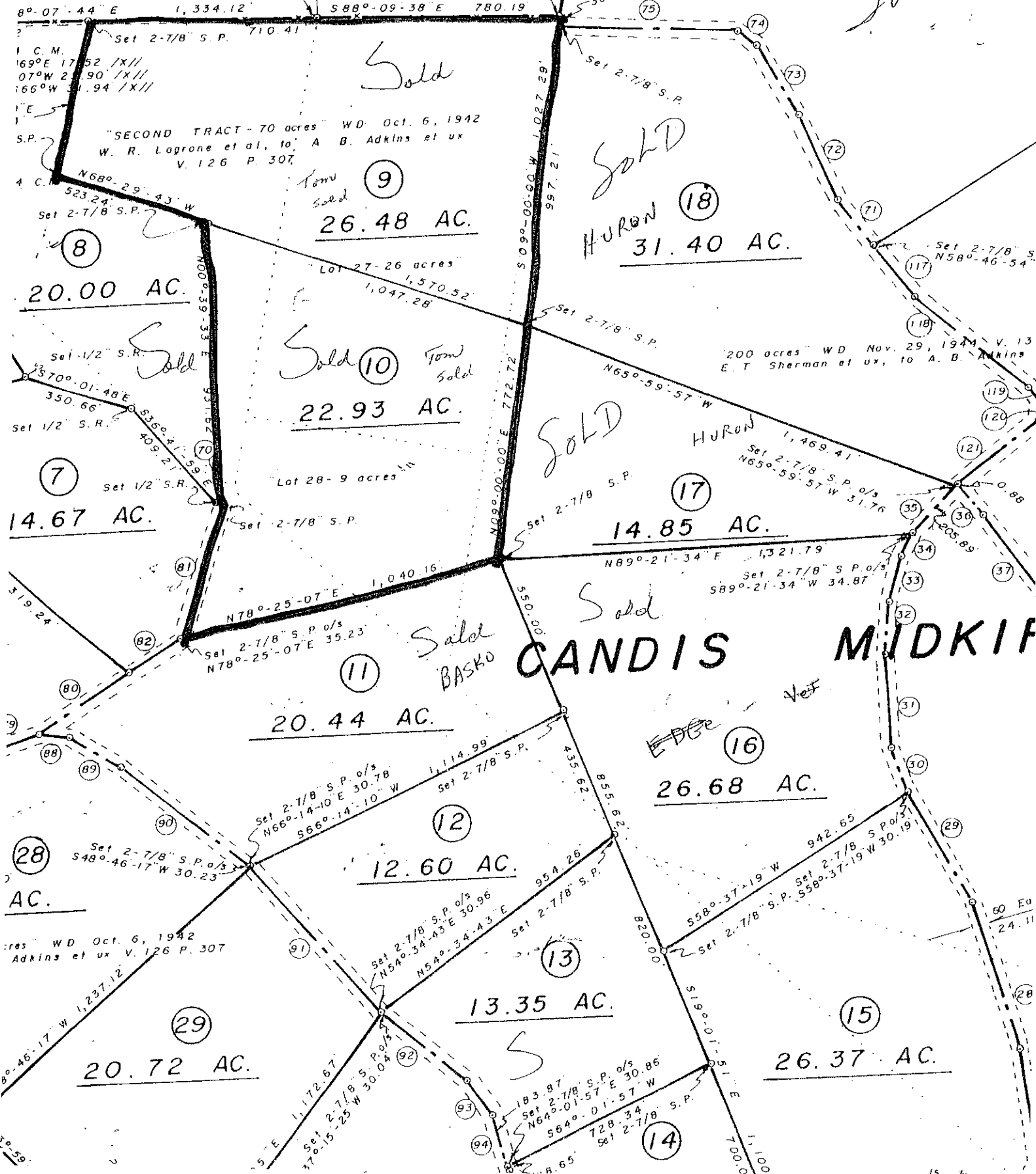
Sold

Sold

Sold

Sold

Sold



"SECOND TRACT - 70 acres" WD Oct. 6, 1942
W. R. Lagrone et al, to A. B. Adkins et ux
V. 126 P. 307

"200 acres" WD Nov. 29, 1944 V. 13:
E. T. Sherman et ux, to A. B. Adkins

CANDIS MIDKIFF

"res" WD Oct. 6, 1942
Adkins et ux V. 126 P. 307