

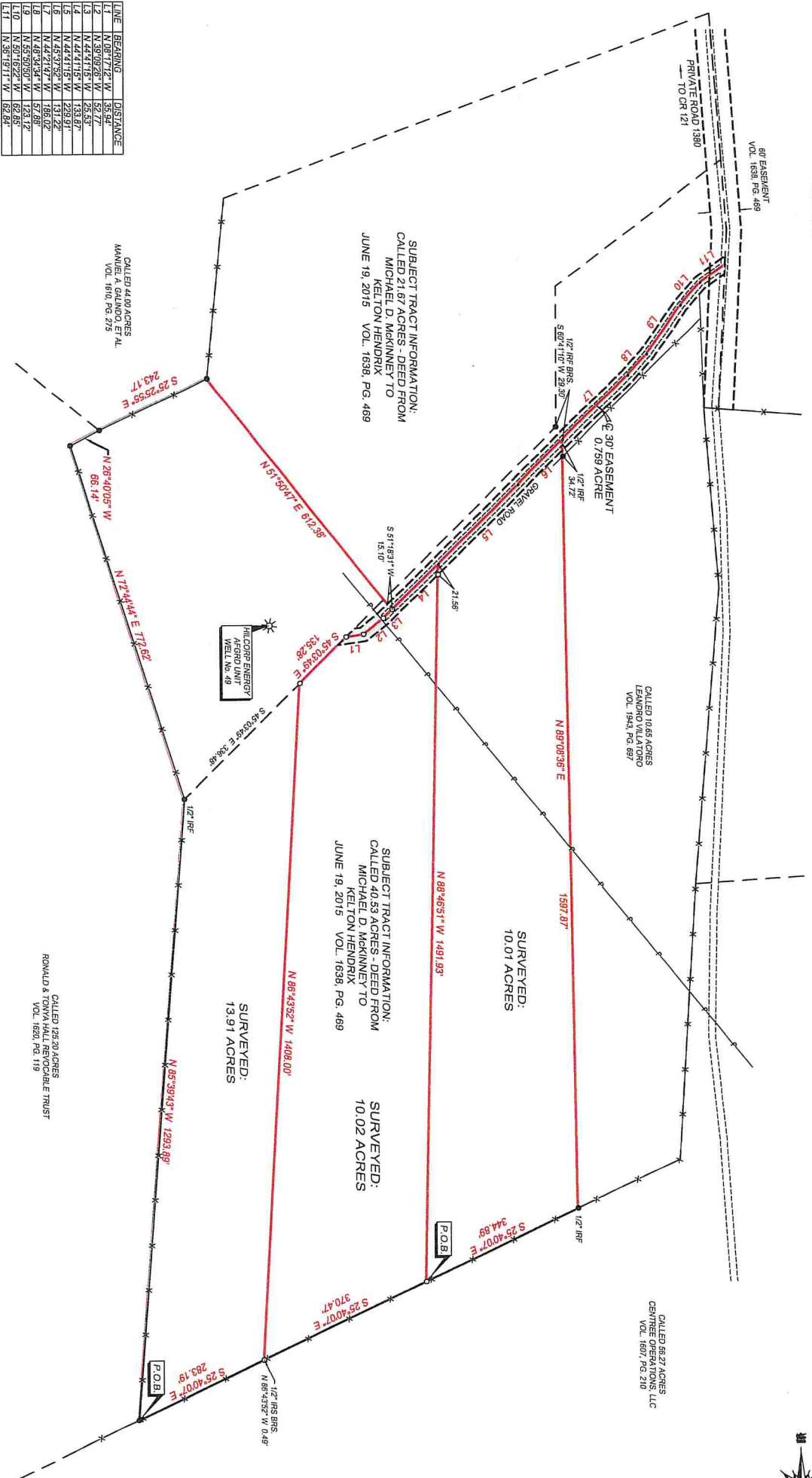
RAMON DE LA GARZA  
A-8

CALLED 11.63 ACRES  
KELTON HENDRIX  
VOL. 1640 PG. 728

CALLED 9.70 ACRES  
CENTRE OPERATIONS, LLC  
VOL. 1600 PG. 800

CALLED 10.66 ACRES  
LEANDRO VILLALBA  
VOL. 1541 PG. 897

CALLED 96.27 ACRES  
CENTRE OPERATIONS, LLC  
VOL. 1607 PG. 210

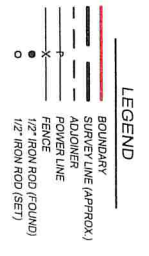


LINE	BEARING	DISTANCE
L1	N 08°17'12\"/>	

BEARINGS ARE BASED ON THE TEXAS STATE PLANE COORDINATE SYSTEM  
NAD83 TEXAS CENTRAL ZONE 4803 AS DERIVED BY GPS OBSERVATIONS.

I, MATT FRANKS, REGISTERED PROFESSIONAL LAND SURVEYOR NO. 068892097, THIS PLAT REPRESENTS THE RESULTS OF AN ON THE GROUND SURVEY MADE BY ME OR UNDER MY SUPERVISION.

MATT FRANKS, P.L.S. 6363  
COUNTY CLERK  
COUNTY OF TARRANT, TEXAS



PLAT OF SURVEY  
SHOWING PART OF THE  
RAMON DE LA GARZA SURVEY, A-8  
LEON COUNTY, TEXAS



G-TEX  
SURVEYING & MAPPING  
2711 W. Loop West, Suite 110  
Ft. Worth, TX 76107  
Phone: (817) 538-7633  
Fax: (817) 538-7633  
Email: info@gtex.com  
www.gtex.com

JOB: 230215 DATE: 12-13-2023 CLIENT: HENDRIX