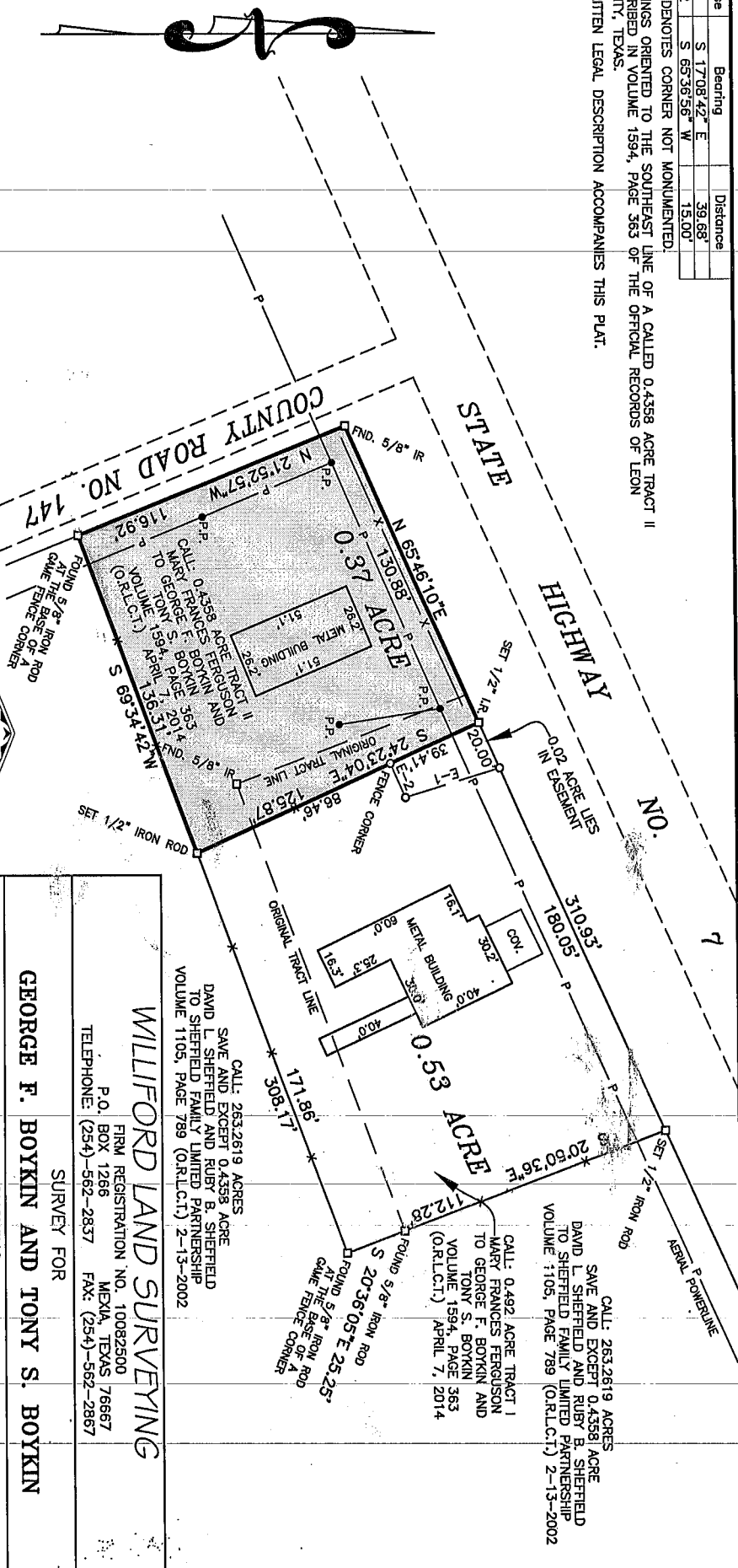


Course	Bearing	Distance
E-1	S 17°08'42" E	39.68'
E-2	S 65°36'56" W	15.00'

O - DENOTES CORNER NOT MONUMENTED.
 BEARINGS ORIENTED TO THE SOUTHEAST LINE OF A CALLED 0.4358 ACRE TRACT II DESCRIBED IN VOLUME 1594, PAGE 363 OF THE OFFICIAL RECORDS OF LEON COUNTY, TEXAS.
 A WRITTEN LEGAL DESCRIPTION ACCOMPANIES THIS PLAT.



I, James C. Williford, Registered Professional Land Surveyor No. 5973, do hereby certify that the plat shown hereon was prepared from an actual survey made on the ground under my direction and supervision.

PRELIMINARY PLAT

JAMES C. WILLIFORD REGISTERED PROFESSIONAL LAND SURVEYOR NO. 5973



WILLIFORD LAND SURVEYING		CALL: 263-2619 ACRES SAVE AND EXCEPT 0.4358 ACRE DAVID L. SHEFFIELD AND RUBY B. SHEFFIELD TO SHEFFIELD FAMILY LIMITED PARTNERSHIP VOLUME 1105, PAGE 789 (O.R.L.C.T.) 2-13-2002	
GEORGE F. BOYKIN AND TONY S. BOYKIN SURVEY FOR SHOWING		CALL: 0.492 ACRE TRACT I MARY FRANCES FERGLISON TO GEORGE F. BOYKIN AND TONY S. BOYKIN VOLUME 1594, PAGE 363 (O.R.L.C.T.) APRIL 7, 2014	
PART OF THE TEXAS CENTRAL R.R. COMPANY SURVEY, A-1146, LEON COUNTY, TEXAS		CALL: 263-2619 ACRES SAVE AND EXCEPT 0.4358 ACRE DAVID L. SHEFFIELD AND RUBY B. SHEFFIELD TO SHEFFIELD FAMILY LIMITED PARTNERSHIP VOLUME 1105, PAGE 789 (O.R.L.C.T.) 2-13-2002	
DRAWN BY: C. WILLIFORD DATE: JANUARY 20, 2016 SCALE: 1" = 50 FT.	CHECKED BY: ***** FIELD BOOK: 42112 JOB NO.: 16-004		