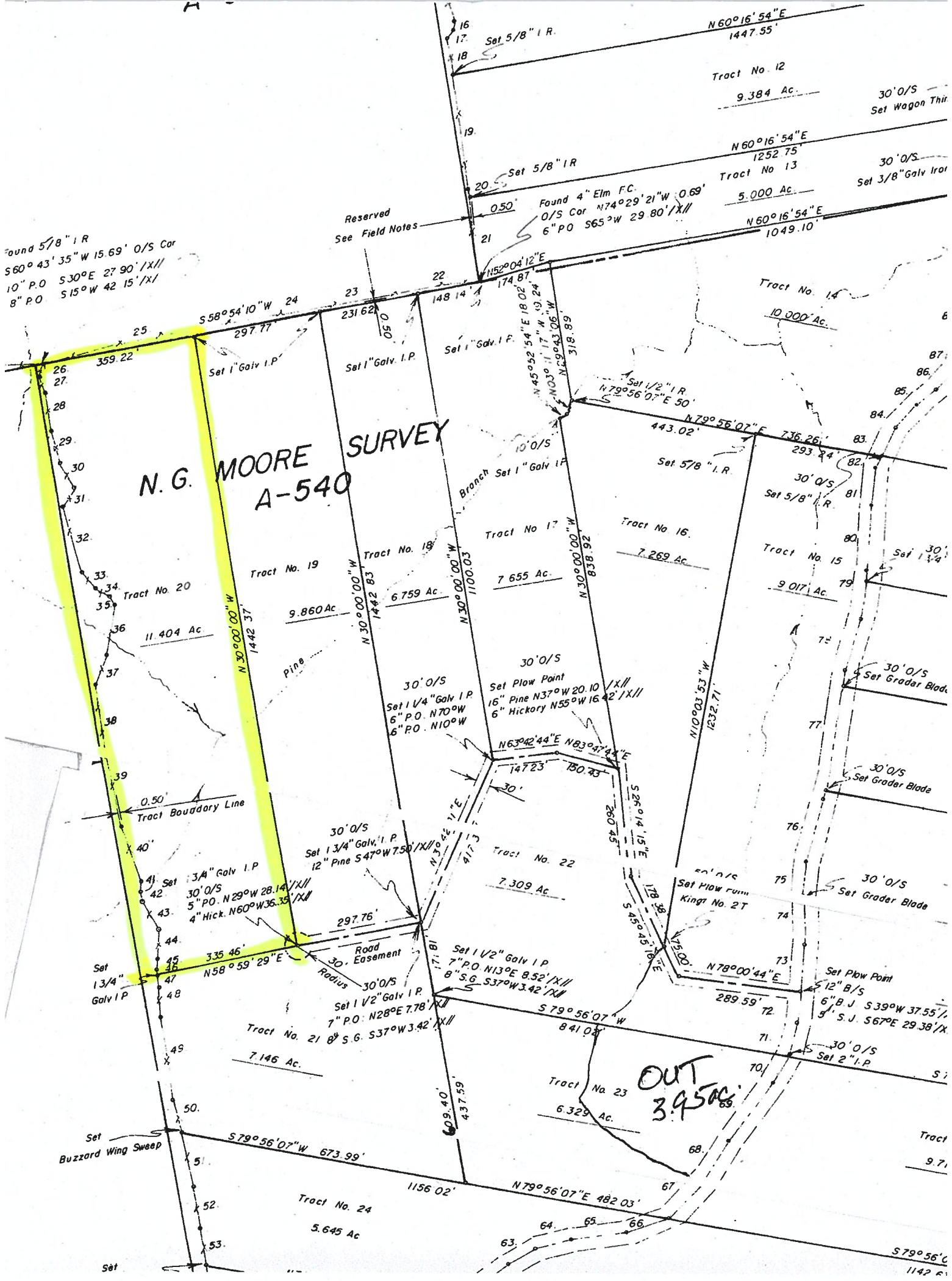


Found 5/8" I.R.
S60°43'35"W 15.69' O/S Cor
10" P.O. S30°E 27'90"/X//
8" P.O. S15°W 42'15'/X//

N. G. MOORE SURVEY A-540



Reserved
See Field Notes

N60°16'54"E
1447.55'
Tract No. 12
9.384 Ac.

N60°16'54"E
1252.75'
Tract No. 13
5.000 Ac.

Tract No. 14
10.000 Ac.

Found 4" Elm F.C.
O/S Cor N74°29'21"W 0.69'
6" P.O. S65°W 29'80'/X//

Tract No. 15
9.017 Ac.
Tract No. 16
7.269 Ac.
Tract No. 17
7.655 Ac.
Tract No. 18
6.759 Ac.
Tract No. 19
9.860 Ac.
Tract No. 20
11.404 Ac.

Set Plow Point
16" Pine N37°W 20.10' X//
6" Hickory N55°W 16.42' X//

Set 1 3/4" Galv I.P.
Set 1 3/4" Galv I.P.
30' O/S
5" P.O. N29°W 28.14' X//
4" Hick. N60°W 36.35' X//
Set 1 3/4" Galv I.P.
30' O/S
5" P.O. N29°W 28.14' X//
4" Hick. N60°W 36.35' X//

Set 1 1/2" Galv I.P.
7" P.O. N13°E 8.52' X//
8" S.G. S37°W 3.42' X//
Set 1 1/2" Galv I.P.
7" P.O. N13°E 8.52' X//
8" S.G. S37°W 3.42' X//
Set 1 1/2" Galv I.P.
7" P.O. N28°E 7.78' X//
7" P.O. N28°E 7.78' X//

OUT
3.9500

Set Plow Point
12" B/S
6" B.J. S39°W 37.55'/X//
5' S.J. S67°E 29.38'/X//

Set Buzzard Wing Sweep

Tract No. 24
5.645 Ac.

Tract No. 23
6.329 Ac.

Tract No. 22
7.309 Ac.

Tract No. 21
7.146 Ac.

Tract No. 20
11.404 Ac.

Tract No. 19
9.860 Ac.

Tract No. 18
6.759 Ac.

Tract No. 17
7.655 Ac.

Tract No. 16
7.269 Ac.

Tract No. 15
9.017 Ac.

Tract No. 14
10.000 Ac.

Tract No. 13
5.000 Ac.

Tract No. 12
9.384 Ac.