

Bearings based on the 103.943 Acres.



NOTE: This land is in Zone X per the FEMA NFIP FIRM of Leon County, Texas Map No. 4828BC0400C effective November 20, 2013.

THOMAS SALIS SURVEY A-847 (called THOMAS SALES)

- 1 N 60°08'11" W 115.95'
- 2 N 49°17'35" W 152.99'

Secure Covenant Interests, Ltd
103.943 Acres
V.1770 P. 28

21.019 ACRES

4

N 65°04'05" E 1851.35'

Secure Covenant Interests, Ltd
103.943 Acres
V. 1770 P. 28

15.048 ACRES

5

S 16°41'21" W 1508.06'

Secure Covenant Interests, Ltd
103.943 Acres
V. 1770 P. 28

13.562 ACRES

6

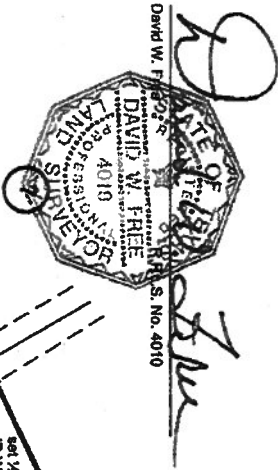
Secure Covenant Interests, Ltd
103.943 Acres
V. 1770 P. 28

SURVEY PLAT OF 15.048 ACRES IN THE
THOMAS SALIS SURVEY, A-847
LEON COUNTY, TEXAS

SCALE: 1" = 200' JANUARY 30, 2020
Revised: FEBRUARY 1, 2021

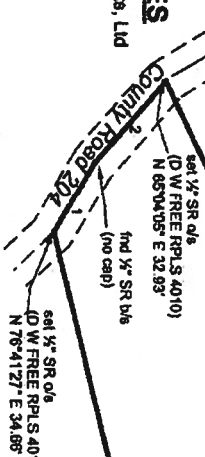
JACK JORDAN SURVEY A-1156

Emin Franklin
78.5 acres
V. 428 P. 152



David W. Free, Surveyor, State of Texas, No. 4010

15.101 ACRES
Secure Covenant Interests, Ltd
103.943 Acres
V.1770 P. 28



Traverse PC