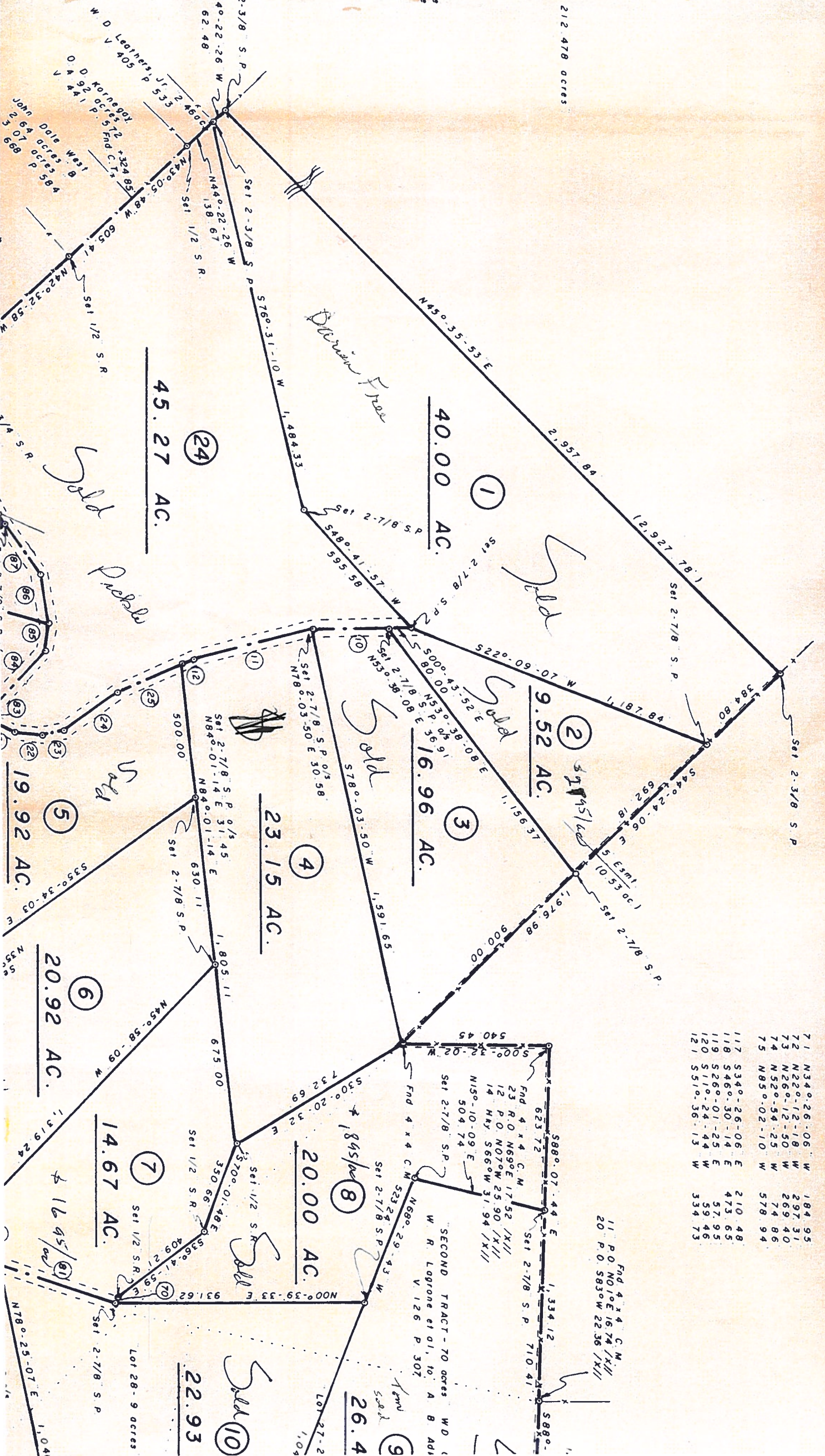


212.478 acres



71	N34°-26'-06"	W	184.95
72	N22°-12'-18"	W	297.31
73	N26°-12'-50"	W	269.40
74	N52°-54'-25"	W	74.86
75	N85°-02'-10"	W	578.94
117	S34°-26'-06"	E	210.48
118	S46°-30'-14"	E	473.65
119	S26°-01'-25"	E	57.95
120	S11°-24'-44"	W	59.46
121	S51°-36'-13"	W	334.73

Fnd 4 x 4 C.M.
 11 P.O. N01°E 16.74' X 11'
 20 P.O. S83°W 22.36' X 11'

SECOND TRACT - 70 acres
 W D L
 W R Logrone et al, to A B Adl
 V. 126 P. 307

26.4

22.93

20.00 AC

14.67 AC

20.92 AC

19.92 AC

16.96 AC

9.52 AC

45.27 AC

40.00 AC