

H. BARNEY  
A-123

2.18 AC.

FOUND I. PIN

N64°08'50"E  
60 FOOT ROAD EASEMENT  
S64°08'50"W  
1.53

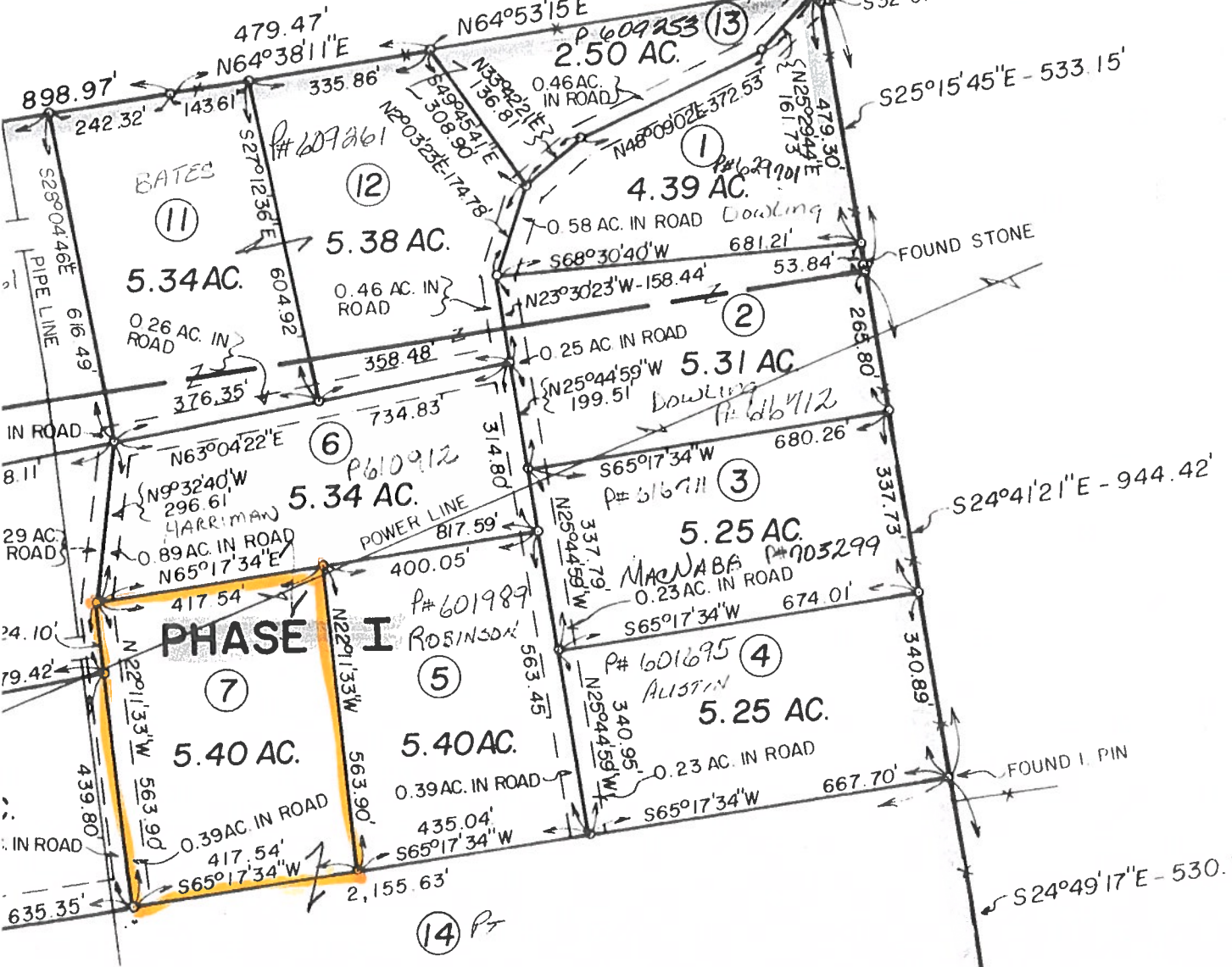
FOUND I. PIN

N24°58'01"W  
S25°04'23"E  
815.69  
831.78  
866.65

FOUND I. PIN

FOUND I. PIN

G. N. R. R.  
A-987



BATES  
11  
5.34 AC.  
0.26 AC. IN ROAD

12  
5.38 AC.  
0.46 AC. IN ROAD

13  
2.50 AC.  
0.46 AC. IN ROAD

1  
4.39 AC.  
0.58 AC. IN ROAD

6  
5.34 AC.  
0.89 AC. IN ROAD

2  
5.31 AC.  
0.25 AC. IN ROAD

3  
5.25 AC.  
0.23 AC. IN ROAD

PHASE I

7  
5.40 AC.  
0.39 AC. IN ROAD

5  
5.40 AC.  
0.39 AC. IN ROAD

4  
5.25 AC.  
0.23 AC. IN ROAD

14 P

S24°41'21"E - 944.42'

S24°49'17"E - 530.75'