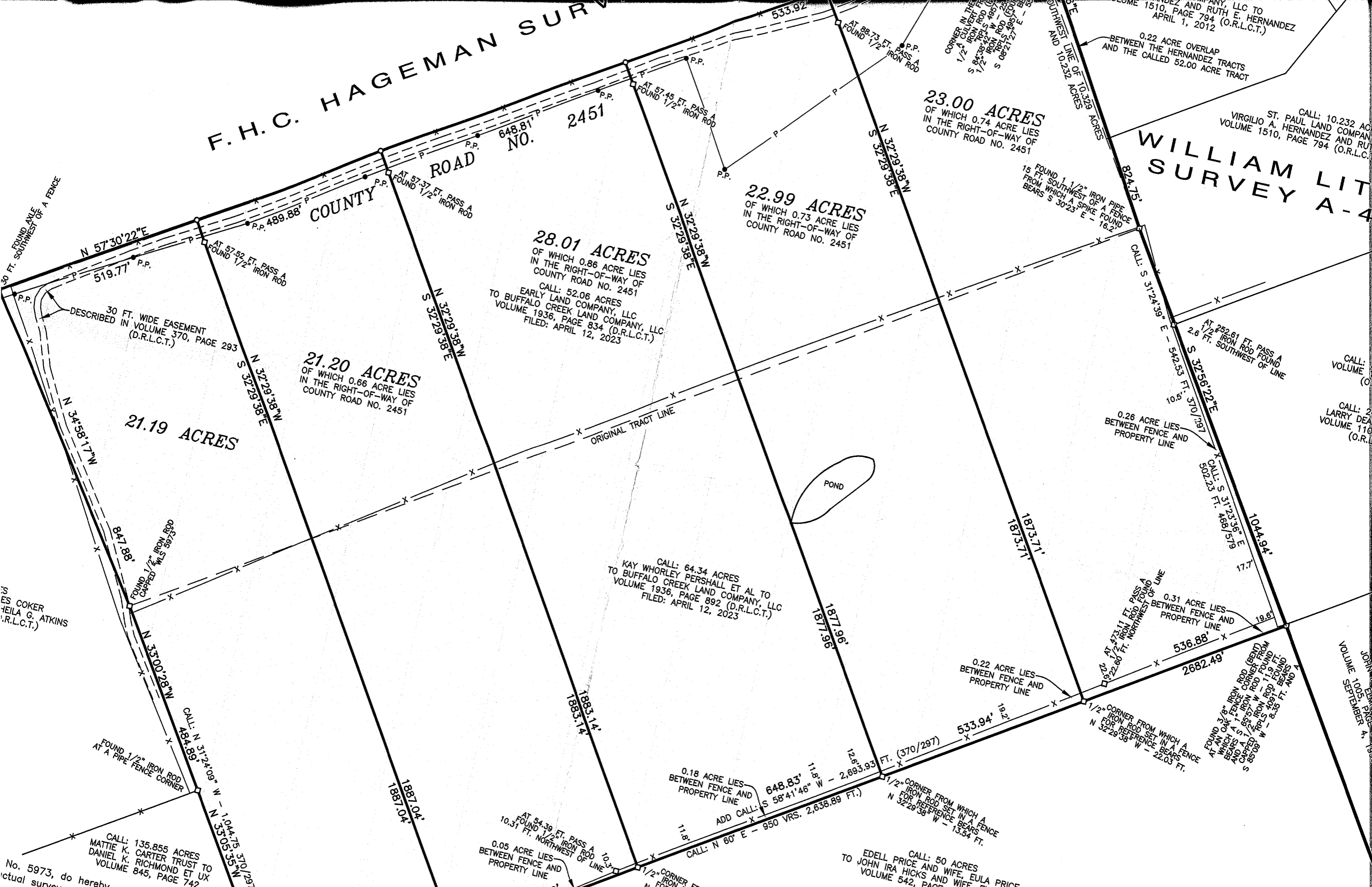


# F. H. C. HAGEMAN SURV



COUNTY ROAD NO. 2451

23.00 ACRES  
OF WHICH 0.74 ACRE LIES  
IN THE RIGHT-OF-WAY OF  
COUNTY ROAD NO. 2451

22.99 ACRES  
OF WHICH 0.73 ACRE LIES  
IN THE RIGHT-OF-WAY OF  
COUNTY ROAD NO. 2451

28.01 ACRES  
OF WHICH 0.86 ACRE LIES  
IN THE RIGHT-OF-WAY OF  
COUNTY ROAD NO. 2451  
CALL: 52.06 ACRES  
EARLY LAND COMPANY, LLC  
TO BUFFALO CREEK LAND COMPANY, LLC  
VOLUME 1936, PAGE 834 (D.R.L.C.T.)  
FILED: APRIL 12, 2023

21.20 ACRES  
OF WHICH 0.66 ACRE LIES  
IN THE RIGHT-OF-WAY OF  
COUNTY ROAD NO. 2451

21.19 ACRES

CALL: 64.34 ACRES  
KAY WHORLEY PERSHALL ET AL TO  
BUFFALO CREEK LAND COMPANY, LLC  
VOLUME 1936, PAGE 892 (D.R.L.C.T.)  
FILED: APRIL 12, 2023

CALL: 135.855 ACRES  
MATTIE K. CARTER TRUST TO  
DANIEL K. RICHMOND ET UX  
VOLUME 845, PAGE 742

CALL: 50 ACRES  
EDELL PRICE AND WIFE, EULA PRICE  
TO JOHN IRA HICKS AND WIFE  
VOLUME 542, PAGE 105

WILLIAM LIT  
SURVEY A-4

CALL: 10.232 ACRES  
ST. PAUL LAND COMPANY  
VIRGILIO A. HERNANDEZ AND RUTH E. HERNANDEZ  
VOLUME 1510, PAGE 794 (O.R.L.C.T.)

CALL: 2  
LARRY DEAN  
VOLUME 110  
(O.R.L.C.T.)

JOHN EMMETT  
VOLUME 1005, PAGE 4  
SEPTEMBER 4, 1935

No. 5973, do hereby  
actual survey