



J. WILEY
A-1061

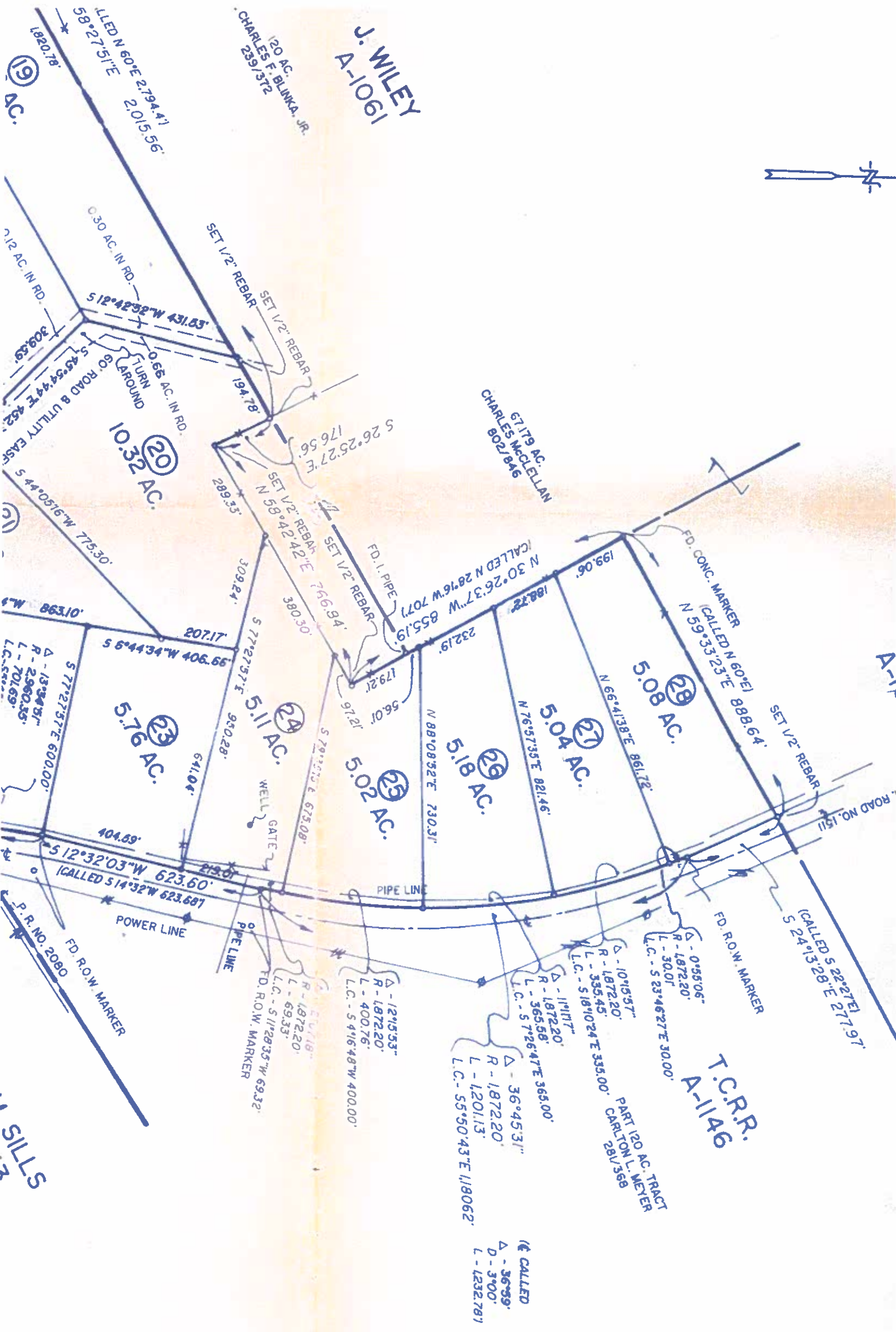
120 AC. CHARLES F. BLINKA, JR.
239/372

67179 AC. CHARLES McCLELLAN
802/846

A-11

T.C.R.R.
A-1146

PART 120 AC. TRACT
CARLTON L. MEYER
281/358



1820.78'
58°27'51"E 2,015.56'
CALLED N 60°E 2,794.41'

0.30 AC. IN RD.
5 12°42'52"W 431.83'
0.66 AC. IN RD.
194.78'
5 26°25'27"E 176.56'
SET 1/2" REBAR
5 44°05'16"W 775.30'
10.32 AC.

5 77°27'57"E 950.28'
5 77°27'57"E 600.00'
5 6°44'34"W 406.65'
5.76 AC.

5 12°32'03"W 623.60'
5 14°32'W 623.687
404.89'
5 77°27'57"E 600.00'
WELL GATE
5.11 AC.

5 70°12'12"E 675.08'
5 70°12'12"E 675.08'
5.02 AC.

5 77°27'57"E 950.28'
5 77°27'57"E 600.00'
5 6°44'34"W 406.65'
5.11 AC.

5 70°12'12"E 675.08'
5 70°12'12"E 675.08'
5.02 AC.

5 70°12'12"E 675.08'
5 70°12'12"E 675.08'
5.02 AC.

5 77°27'57"E 950.28'
5 77°27'57"E 600.00'
5 6°44'34"W 406.65'
5.11 AC.

5 70°12'12"E 675.08'
5 70°12'12"E 675.08'
5.02 AC.

5 70°12'12"E 675.08'
5 70°12'12"E 675.08'
5.02 AC.

5 77°27'57"E 950.28'
5 77°27'57"E 600.00'
5 6°44'34"W 406.65'
5.11 AC.

5 70°12'12"E 675.08'
5 70°12'12"E 675.08'
5.02 AC.

5 70°12'12"E 675.08'
5 70°12'12"E 675.08'
5.02 AC.

5 77°27'57"E 950.28'
5 77°27'57"E 600.00'
5 6°44'34"W 406.65'
5.11 AC.

5 70°12'12"E 675.08'
5 70°12'12"E 675.08'
5.02 AC.

5 70°12'12"E 675.08'
5 70°12'12"E 675.08'
5.02 AC.

STILLS

CALLLED
D - 36°39'
L - 1232.781

CALLLED
R - 1872.20'
L - 30.01'

CALLLED
R - 1872.20'
L - 30.01'

CALLLED
R - 1872.20'
L - 30.01'

CALLLED
R - 1872.20'
L - 30.01'