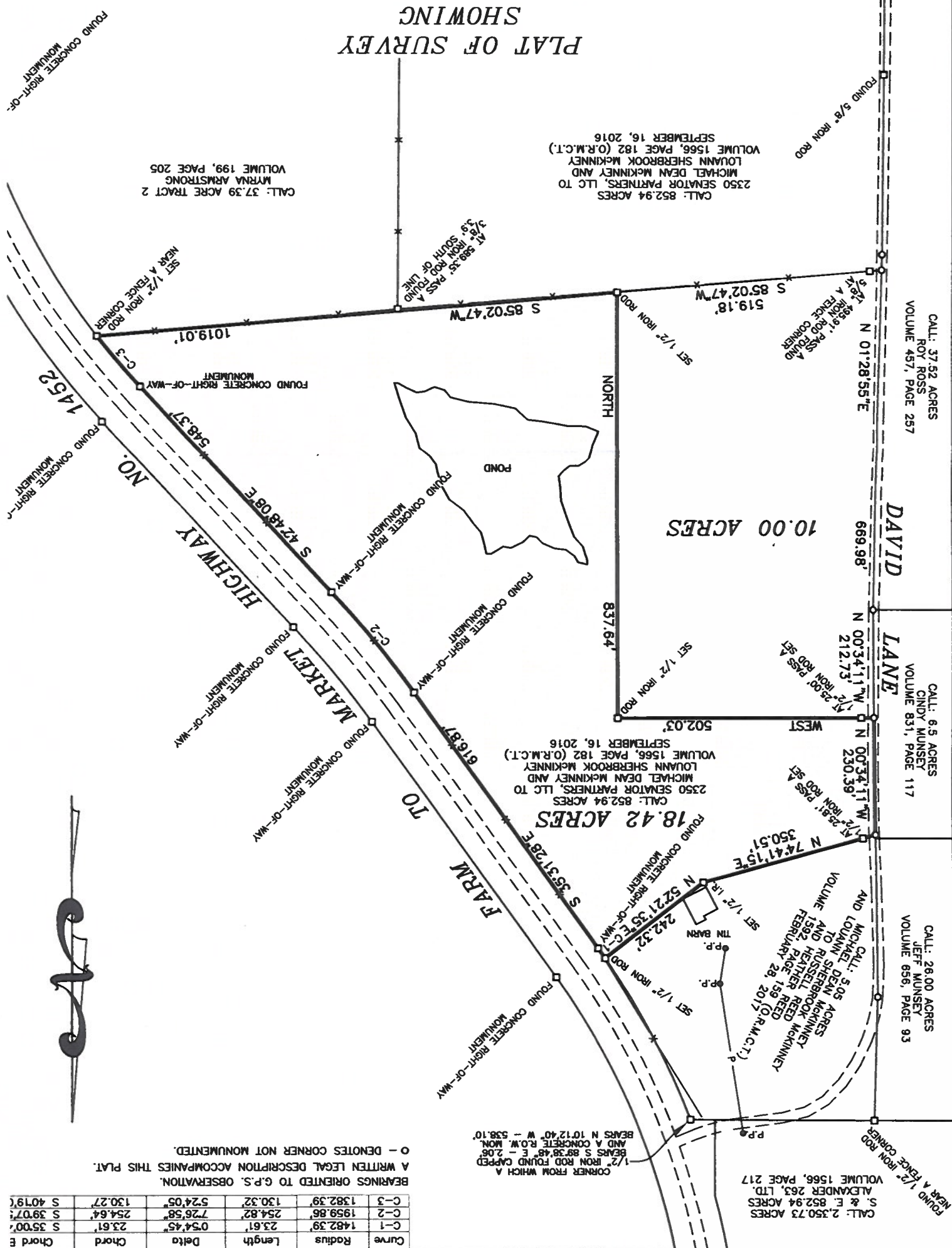


JAMES C. WILLIFORD REGISTERED PROFESSIONAL LAND SURVEYOR NO. 5973



I, James C. Williford, Registered Professional Land Surveyor No. 5973, do hereby certify that the plat shown hereon was prepared from an actual survey made on the ground under my direction and supervision.

## PLAT OF SURVEY SHOWING PART OF THE ELI FENN SURVEY A - 96, MADISON COUNTY, TEXAS



BEARINGS ORIENTED TO G.P.S. OBSERVATION.  
 A WRITTEN LEGAL DESCRIPTION ACCOMPANIES THIS PLAT.  
 O - DENOTES CORNER NOT MONUMENTED.

Curve	Radius	Length	Delta	Chord
C-1	1482.39'	23.61'	0°54'45"	23.61'
C-2	1959.86'	254.82'	7°26'58"	254.64'
C-3	1382.39'	130.32'	5°24'05"	130.27'

Chord E S 35°00' S 39°07' S 40°19'